

Soiled Dishtables

Designed for Left or Right Side Configurations, in Three Lengths



- Designed for right or left configuration
- Designed for wallmount pre-rinse faucet
- Galvanized gussets and legs
- Durable stainless steel 1" adjustable bullet feet
- Hand formed and hand welded
- 30" width; available lengths: 36", 48", 60"
- Backsplash is 8" high with 20" opening for dishwashers
- Deep 6" stainless steel sink bowl (20"x20"x6")
- Slanted top edge polished smooth with 1-1/2" diameter rolled corner edge around the front and side
- Wall mounting brackets included
- NSF & CSA approved



REL-SDT36L	30" x 36" Soiled Dish Table, 1 bowl (20"x20"x6"), Left drainboard, Perforated basket (19.5"x19.5"x5")
REL-SDT36R	30" x 36" Soiled Dish Table, 1 bowl (20"x20"x6"), Right drainboard, Perforated basket (19.5"x19.5"x5")
REL-SDT48L	30" x 48" Soiled Dish Table, 1 bowl (20"x20"x6"), Left drainboard, Perforated basket (19.5"x19.5"x5")
REL-SDT48R	30" x 48" Soiled Dish Table, 1 bowl (20"x20"x6"), Right drainboard, Perforated basket (19.5"x19.5"x5")
REL-SDT60L	30" x 60" Soiled Dish Table, 1 bowl (20"x20"x6"), Left drainboard, Perforated basket (19.5"x19.5"x5")
REL-SDT60R	30" x 60" Soiled Dish Table, 1 bowl (20"x20"x6"), Right drainboard, Perforated basket (19.5"x19.5"x5")

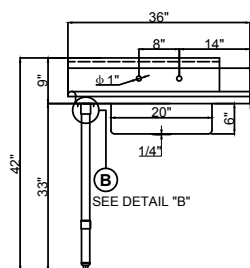
Specifications subject to change without notice.

**Refer to the following pages
for drawings and dimensions**

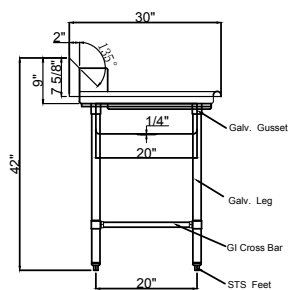
Soiled Dishtables

Designed for Left or Right Side Configurations, in 3 Lengths

REL-SDT36L

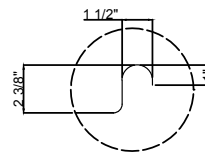


FRONT ELEVATION

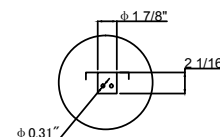
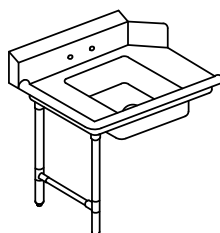
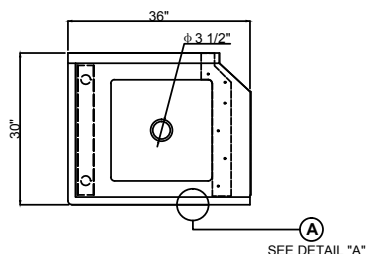


SIDE VIEW

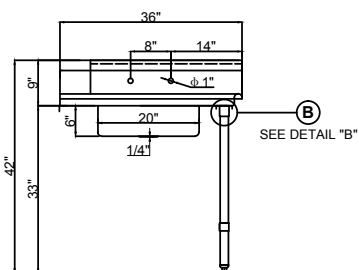
- 16 GA. STAINLESS STEEL CONSTRUCTION.
- GALV. GUSSET AND GALV. LEG AND STAINLESS FEET



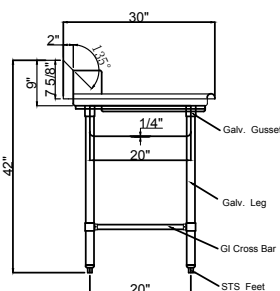
DETAIL "A"



REL-SDT36R

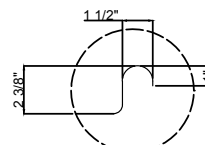


FRONT ELEVATION

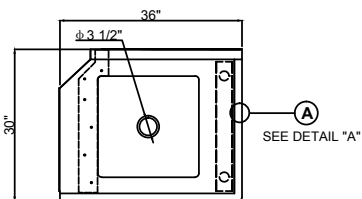


SIDE VIEW

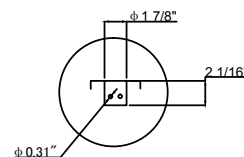
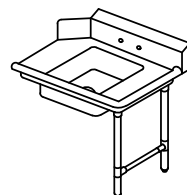
- 16 GA. STAINLESS STEEL CONSTRUCTION.
- GALV. GUSSET AND GALV. LEG AND STAINLESS FEET



DETAIL "A"



PLAN VIEW

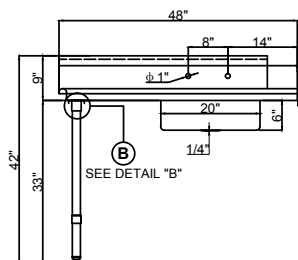


DETAIL "B"

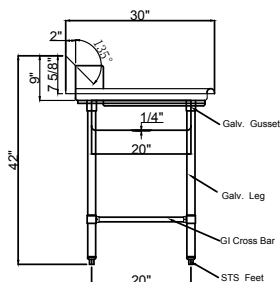
Soiled Dishtables

Designed for Left or Right Side Configurations, in 3 Lengths

REL-SDT48L

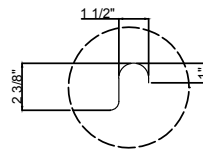


FRONT ELEVATION

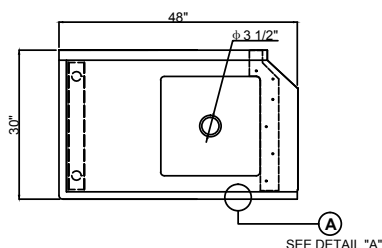


SIDE VIEW

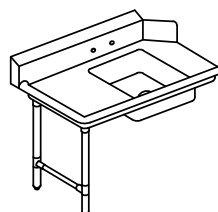
- 16 GA. STAINLESS STEEL CONSTRUCTION.
- GALV. GUSSET AND GALV. LEG AND STAINLESS FEET



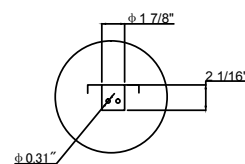
DETAIL "A"



PLAN VIEW

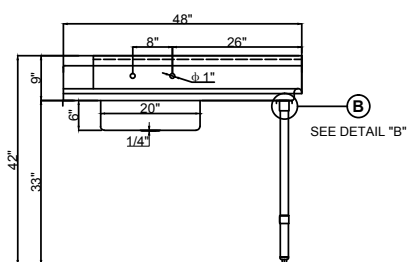


ISOMETRIC

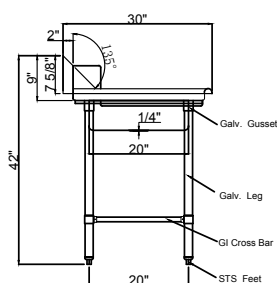


DETAIL "B"

REL-SDT48R

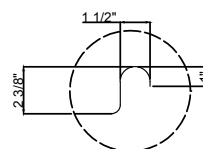


FRONT ELEVATION

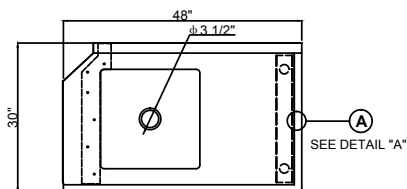


SIDE VIEW

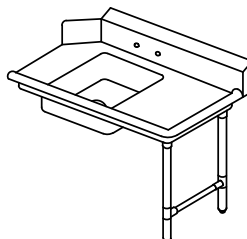
- 16 GA. STAINLESS STEEL CONSTRUCTION.
- GALV. GUSSET AND GALV. LEG AND STAINLESS FEET



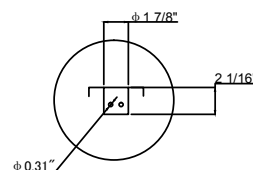
DETAIL "A"



PLAN VIEW



ISOMETRIC

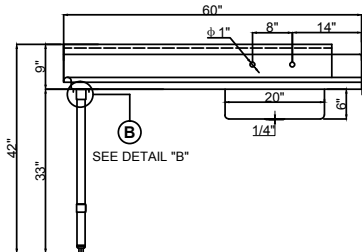


DETAIL "B"

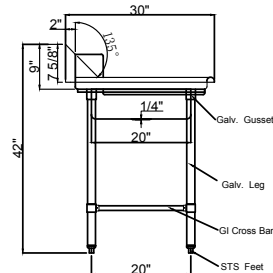
Soiled Dishtables

Designed for Left or Right Side Configurations, in 3 Lengths

REL-SDT60L

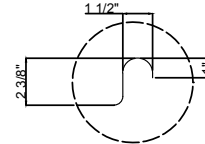


FRONT ELEVATION

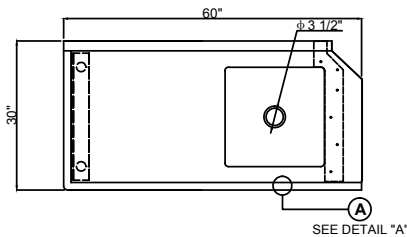


SIDE VIEW

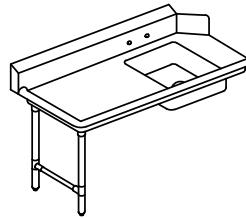
- 16 GA. STAINLESS STEEL CONSTRUCTION.
- GALV. GUSSET AND GALV. LEG AND STAINLESS FEET



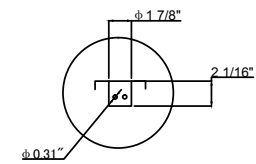
DETAIL "A"



PLAN VIEW

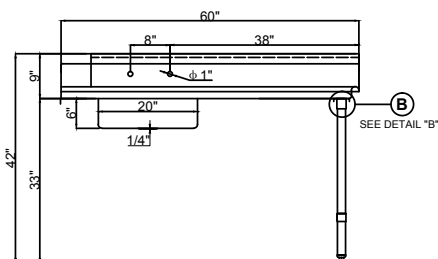


ISOMETRIC

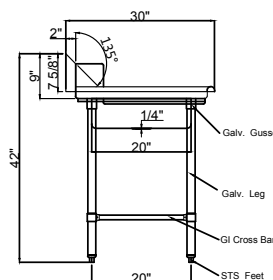


DETAIL "B"

REL-SDT60R

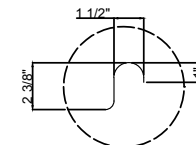


FRONT ELEVATION

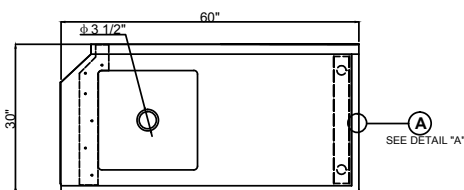


SIDE VIEW

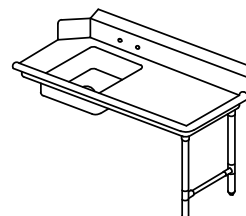
- 16 GA. STAINLESS STEEL CONSTRUCTION.
- GALV. GUSSET AND GALV. LEG AND STAINLESS FEET



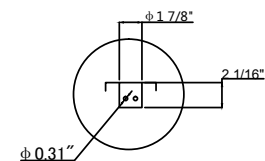
DETAIL "A"



PLAN VIEW



ISOMETRIC



DETAIL "B"